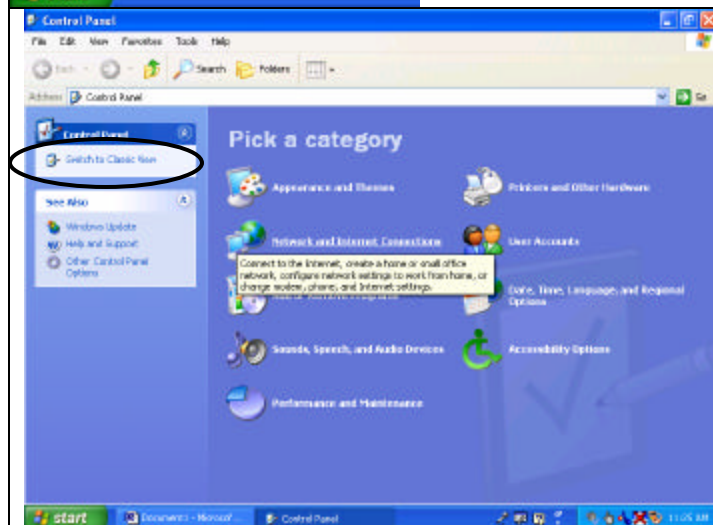


If you can not login to NC WISE <https://esis.ncwise.org>, after installing the Jinitiator file and you see a message at the bottom of the screen that says "**Main not found**", please do the following.

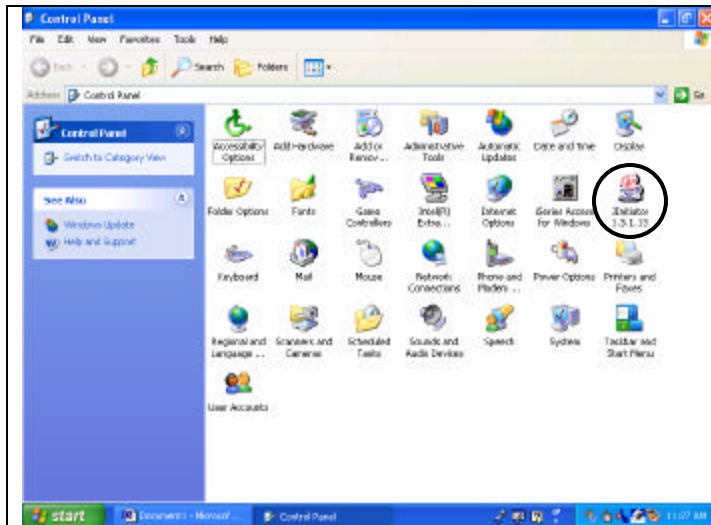
**MAKE SURE TO CLOSE THE INTERNET BROWSER AND ANY OTHER PROGRAMS YOU HAVE OPEN BEFORE MAKING THESE CHANGES.**



From the start menu, open the Control Panel



If you see this screen, on the left side of the screen click on **Switch to Classic View**

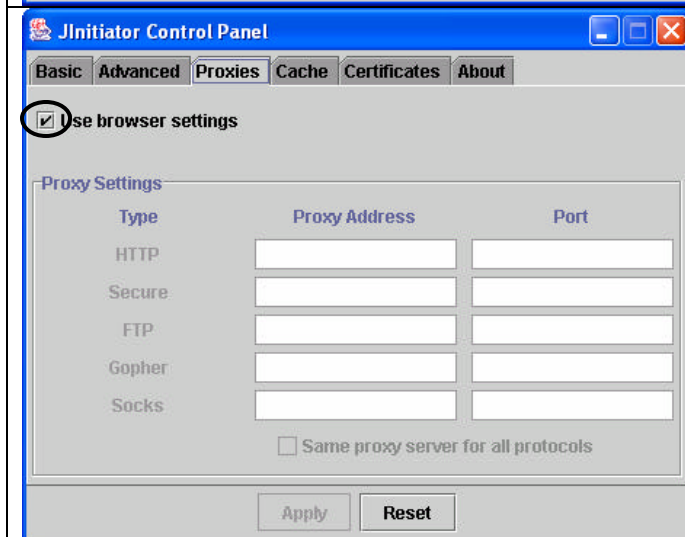


Locate the icon for JInitiator 1.3.1.13 and double click to open.

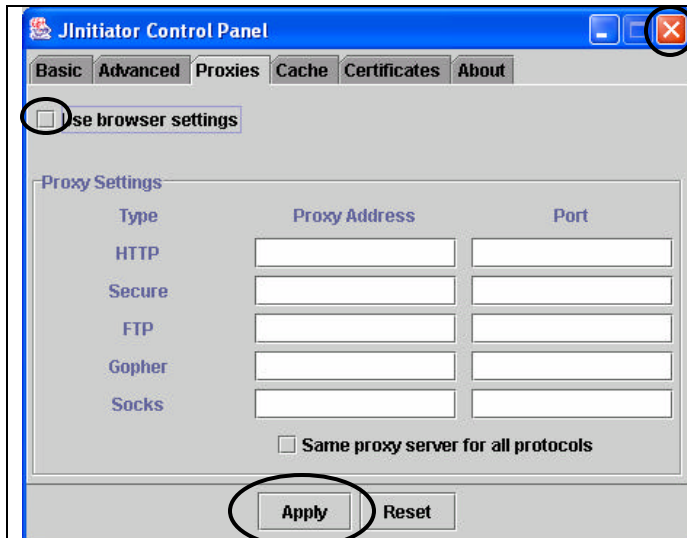


This window opens in the Basic tab. Don't change settings on this screen.

Click on the **Proxies** tab to open new window.

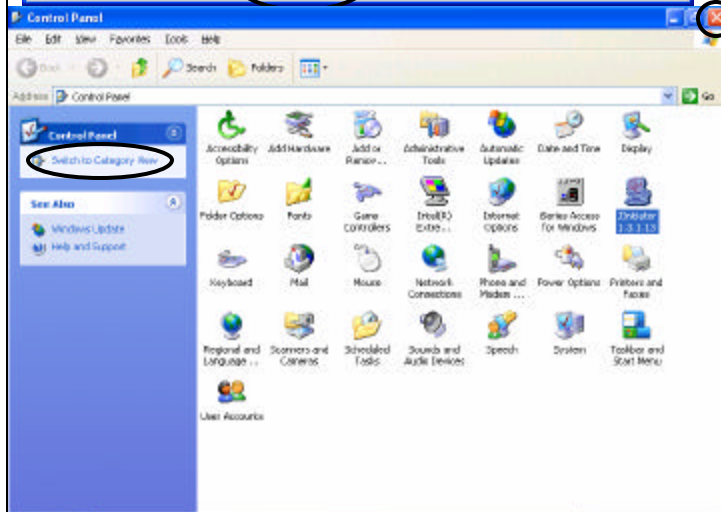


Click in the **Use browser settings** checkbox to remove the check.



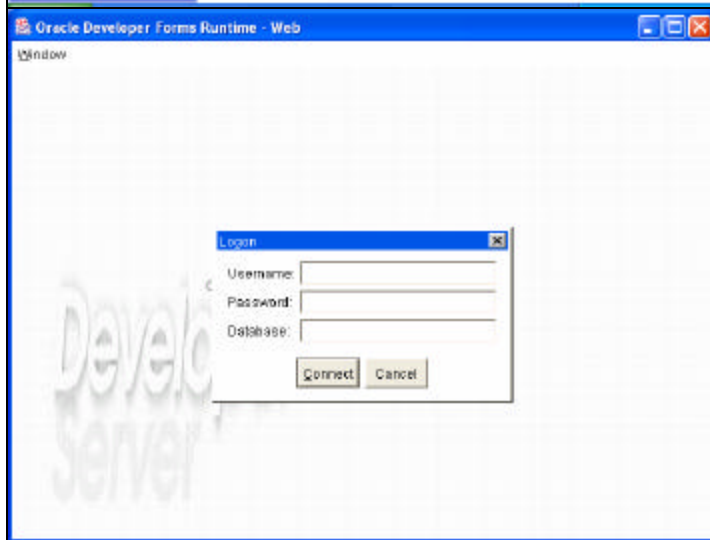
With the check removed from the **Use browser settings** checkbox, click the **Apply** button to save the settings.

Close the window by clicking on the red **X** in upper right corner of window.



You may switch back to Category View if you wish by clicking the **Switch to Category View** in the left side of the screen before closing the window.

Close the Control Panel by clicking on the red X in the upper right corner of the window.



Now you can open Internet Explorer and go to <https://esis.ncwise.org> and login to NC WISE. You should get the following screen after making these changes.