



BACK
TO
SCHOOL



Vision/Mission Statements

“Valmead School is a place where all students will be successful and become life-long learners.”



“The mission of Valmead Elementary School is to provide a safe, positive learning environment that promotes academic achievement, character development, creative minds and the courage to be a responsible individual.”

Want to contribute to our school?

Join PTO and Volunteer at our school.

We can use your help in many ways - see Patty Clonch (volunteer Coordinator) to learn how you can help!

If you have a special talent and would like to share it with our students and faculty, please let us know.



We continue to...



Add more technological devices - We have Smart boards in every classroom and students have access to chromebooks in their classrooms.

Fund 1 teaching position and provide Professional development through Title 1.

Appreciate the donations and support from Fairfield Chair Company, Crestview Baptist Church, Trinity United Methodist Church, Calvary Baptist Church,

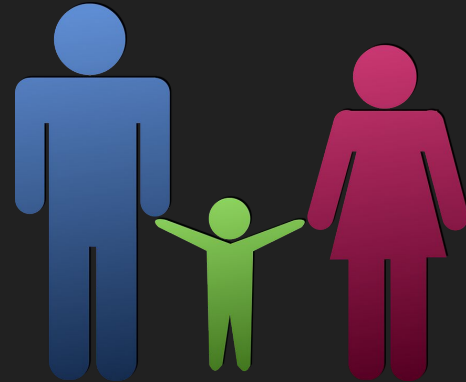
Greer Laboratories, Lenoir Police Department,

Just People Now Inc. and Community Members.



We continue to...

Focus on promoting growth in Reading schoolwide...and we NEED your help to support your child's academic achievement.



Daily Routine

Arrival and Dismissal

- Arrival Procedure - (K-2 report to classrooms for breakfast and morning work)
- Enter and Exit the Parking Lot the correct way. Parking lot has been striped with directional arrows to ease the flow of traffic.
- Car Riders - please remain in your car and in the line to maximize safety (do not walk up to get your child, and do not come and sit in the office or other areas of the school to wait for your child.)
- Attendance and Tardies
- School day starts at 8:00 and ends at 2:40 pm. Students may arrive in the mornings as early as 7:30. Please do not drop students off before 7:30, there will be no supervision for students.

Parent/Teacher Support Network (Planners and Tuesday bags)

1st 9 Weeks Conference - Required

KISS and Go

Testing and Assessments

Reading (Please read with your child 30 minutes each night.)



Other Important Information...

- Cell Phones/Texting/Use of Phones
- Free Breakfast and Lunch for all students. Snacks are extra students must bring \$ to purchase.
- FRL Forms are all online
- Discipline
- Forms to Return (Compact, Handbook, etc...)
- Student/Parent Handbook
- Safety
 - Visitors (use front entrance doors only and check in with the office)
 - Drills (Fire, Lockdown, Tornado “severe weather”)



Title 1 Program

Brochure and Information

Student Enrollment and Poverty Census

Funding

Teaching Position (maintain lower class size while promoting the highest level of quality education for our students)

Supplies

Workshops

Substitutes

Tutoring



Parent Involvement

Volunteers

Reading Family Night (Fall)

Math Family Night (Spring)

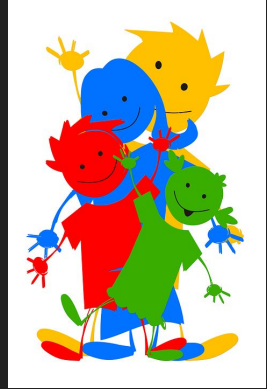
Book Fair (Fall and Spring)

PTO

Fundraisers

Parent Engagement Policy

Student, Parent, School Compact



How can I find out more?

Valmead Elementary School Webpage

Class Dojo

Update your School Information with the Office

Blackboard Phone Calls, Emails, and Text Messages

Parent Portal - Sign up in the Office

